



Quickly and easily gather data to monitor and evaluate environmental conditions



BROWNFIELDS

HAZARDOUS WASTE REMEDIATION

COMMUNITY CLEANUPS

SUSPECTED CONTAMINATION

CONSTRUCTION SITES

LANDFILLS

DISPOSAL SITES

INDUSTRIAL WASTE SITES

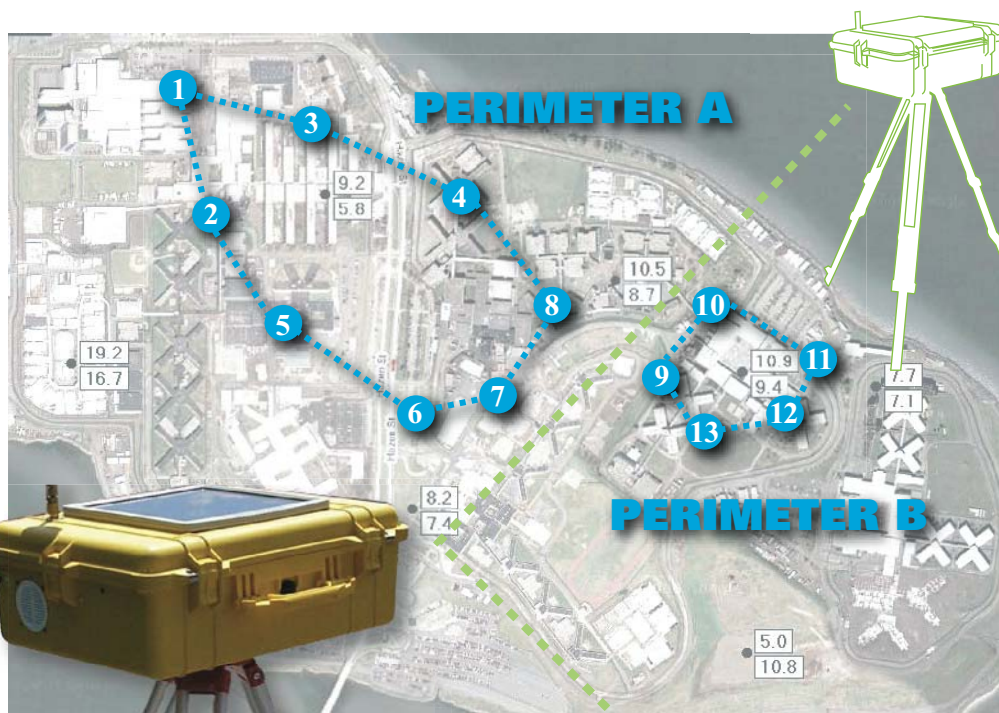
EMERGENCY RESPONSES

HOMELAND SECURITY

ENVIRONMENTAL MONITORING SYSTEM FROM

EMILCOTT





**TRUE PERIMETER
SETUP TO
CONCENTRATE AND
MONITOR SPECIFIC
RECEPTORS!**

- *Flexible*
- *Changeable*
- *Self-determined*
- *Portable*
- *Unmanned*
- *Mobile*

**REAL-TIME
DATA MONITORING!**

**CONTINUOUS
DATA COLLECTION!**

**MONITOR, TRACK
AND REPORT**

- *Gases*
- *Vapor*
- *Noise*
- *Radiation*

**Includes weather
information such as
precipitation, wind
speed, temperature,
humidity, wind direction**

FEATURES

SETUP

- Match existing monitoring perimeter – relocate as needed
- Configure instrumentation and stations to concentrate and monitor specific receptors and maximize spread
- Select best power options for site (battery, solar, hardwire or combination)
- Include up to 125 instruments per COM port
- Use any serial/USB-capable instruments
- Include rugged outdoor protection

COMMUNICATION

- Remote access via pager, PDA, telephone, email, internet, intranet, computer, annunciators, etc.
- Radio-telemetry for wireless and remote operation
- Multiple on-line views (maps, devices, configuration, setup, weather)
- Built-in reports – summary, equipment activity, datalogging, alerts, levels, trends, custom queries
- User-defined instrument queries
- User-defined alert thresholds and alarm logging

ENVIRONMENTAL MONITORING SYSTEM FROM EMILCOTT

GET THE GREEN LIGHT WITH EMILCOTT'S ENVIRONMENTAL MONITORING SYSTEM

- Centralized, standardized control of an entire air monitoring system
- Adaptable, portable and changeable "on the fly" perimeter design
- Flexible instrumentation setup to match the site and goals
- Collect data within hours of initial setup
- Reduce risk and exposure to project and onsite personnel
- Reduce onsite manpower and risk with unmanned and continuous monitoring stations
- Maintain around-the-clock data collection coverage (24x7x365)
- Meet environmental and safety regulations
- Design an admissible data collection tool
- Cultivate a proactive image
- Gather information to make well-informed and timely decisions

SETTINGS

Access and manipulate program and device settings.



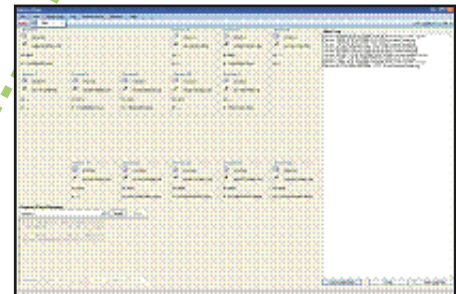
Device	Active	Device Name	Device Type	Current	Current	Average	Average
Device 1	<input type="checkbox"/>	Device 1	DataRAM 4	200	300	200	300
Device 2	<input type="checkbox"/>	Device 2	DataRAM 4				
Device 3	<input type="checkbox"/>	Device 3	DataRAM 4				
Device 4	<input type="checkbox"/>	Device 4	DataRAM 4	200	300	200	300
Device 5	<input type="checkbox"/>	Device 5	DataRAM 4	200	300	200	300
Device 6	<input type="checkbox"/>	Device 6	DataRAM 4	200	300	200	300
Device 7	<input type="checkbox"/>	Device 7	DataRAM 4	200	300	200	300
Device 8	<input type="checkbox"/>	Device 8	DataRAM 4	200	300	200	300
Device 9	<input type="checkbox"/>	Device 9	DataRAM 4	200	300	200	300
Device 10	<input type="checkbox"/>	Device 10	DataRAM 4	200	300	200	300
Device 11	<input type="checkbox"/>	Device 11	DataRAM 4	200	300	200	300

SUMMARY REPORT

Review average concentrations; monitoring start and stop times; maximum block average and time correlations for each device.

INSTRUMENT VIEW

Real-time tracking of instruments and weather.

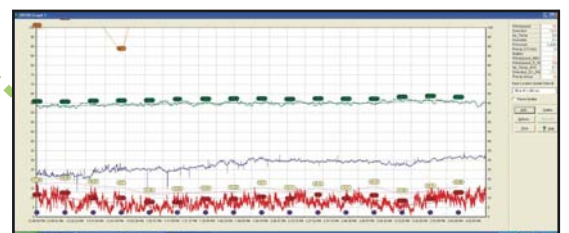


MAP VIEW

Interactive site boundary map with instrumentation (perimeter) placement. Includes wind direction and speed.

EQUIPMENT ACTIVITY REPORT

Display a graph of real-time data logged to the SQL database. Select the instrument, running average, block average, warning level, action level and concentration levels.



CENTRALIZED CONTROL

- Flexible Instrumentation Setup
- Continuous Data Collection
- Real-time Data Monitoring
- Up to 125 Instruments per COM port
- Portable and Mobile
- Unmanned
- Battery, Solar, Hardwired or Combination
- Hardwired or Telemetry Communication



REAL-TIME DATA COLLECTION

- User-definable Alarm Annunciation
- Multiple Site and Instrumentation Views
- Built-in Reports
- Data Queries
- Continuous Data Logging
- Simultaneous Weather Data Collection
- Remote Access (Pager, PDA, Internet, Intranet, Email, Telephone, etc.)

GREENLIGHT

ENVIRONMENTAL MONITORING SYSTEM
FROM EMILCOTT

EMILCOTT

466 Southern Blvd.
Chatham, NJ 07928

Phone: 973.765.0991
Fax: 973.765.0994

Celebrating
20 Years
1986-2006

Who is asking for an ENVIRONMENTAL MONITORING SYSTEM?

- Community Air Monitoring Programs "CAMPS"
- Contractors
- Utilities
- Construction and Demolition Crews
- Industrial and Commercial Manufacturers
- Risk Management Departments
- Regulatory, Government and Environmental Agencies
- Watch Groups
- Property Owners